

### Main Street Connector

18. East on Duck Creek Trail to Fair Avenue exit
19. South on Fair Avenue to Vander Veer Park
20. Vander Veer Park loop to exit on Main Street
21. South on Main Street to Riverfront Trail

### Jersey Ridge Connector

22. East on Duck Creek Trail to Jersey Ridge Road
23. South on Jersey Ridge Road to Lindsay Park entrance
24. Lindsay Park to Mound Street and River Drive
25. Mound Street south to Riverfront Trail

### Bettendorf Duck Creek Connector

26. East on Duck Creek Trail from Jersey Ridge
27. Duck Creek Park connector
28. Connector path to Bettendorf Recreational Trail

### Riverfront Trail

29. East Riverfront Trail to Bettendorf Riverfront Trail
30. West on Riverfront Trail to downtown Davenport
31. LeClaire Park
32. Modern Woodmen Park and The River's Edge
33. Centennial Park
34. Credit Island Park loop

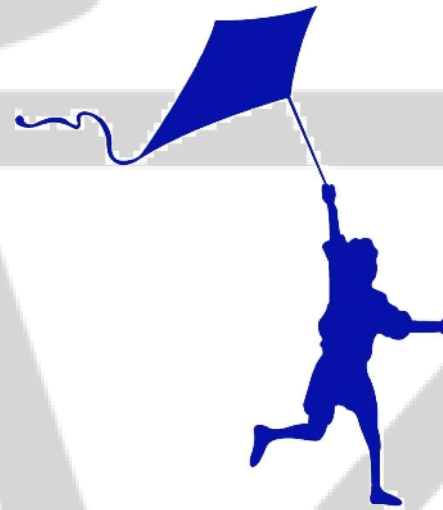


**Duck Creek Recreational Trail** is the oldest bike trail in the Quad Cities. Its origins date back to the 1930's; the present design was begun in the 1970's. Presently, the trail is 13.5 miles, beginning at Davenport's Emeis Park (12) and ending at Devil's Glen Park in Bettendorf.

**The Riverfront Trail** is 7.6 miles long from (29) to (34) including the loop around Credit Island. It offers a scenic view of the Mississippi River and passes through the historical areas of Davenport.

Both trails are now connected from north to south by 4 connectors – the West Side connector, the Marquette connector, the Main Street connector, and the Jersey Ridge Road connector. Access to Bettendorf trails can be found east on the Duck Creek Trail and east on the Riverfront Trail.

# Duck Creek and River Front RECREATIONAL TRAIL



**DAVENPORT PARKS  
AND RECREATION**



**Davenport Parks and Recreation**

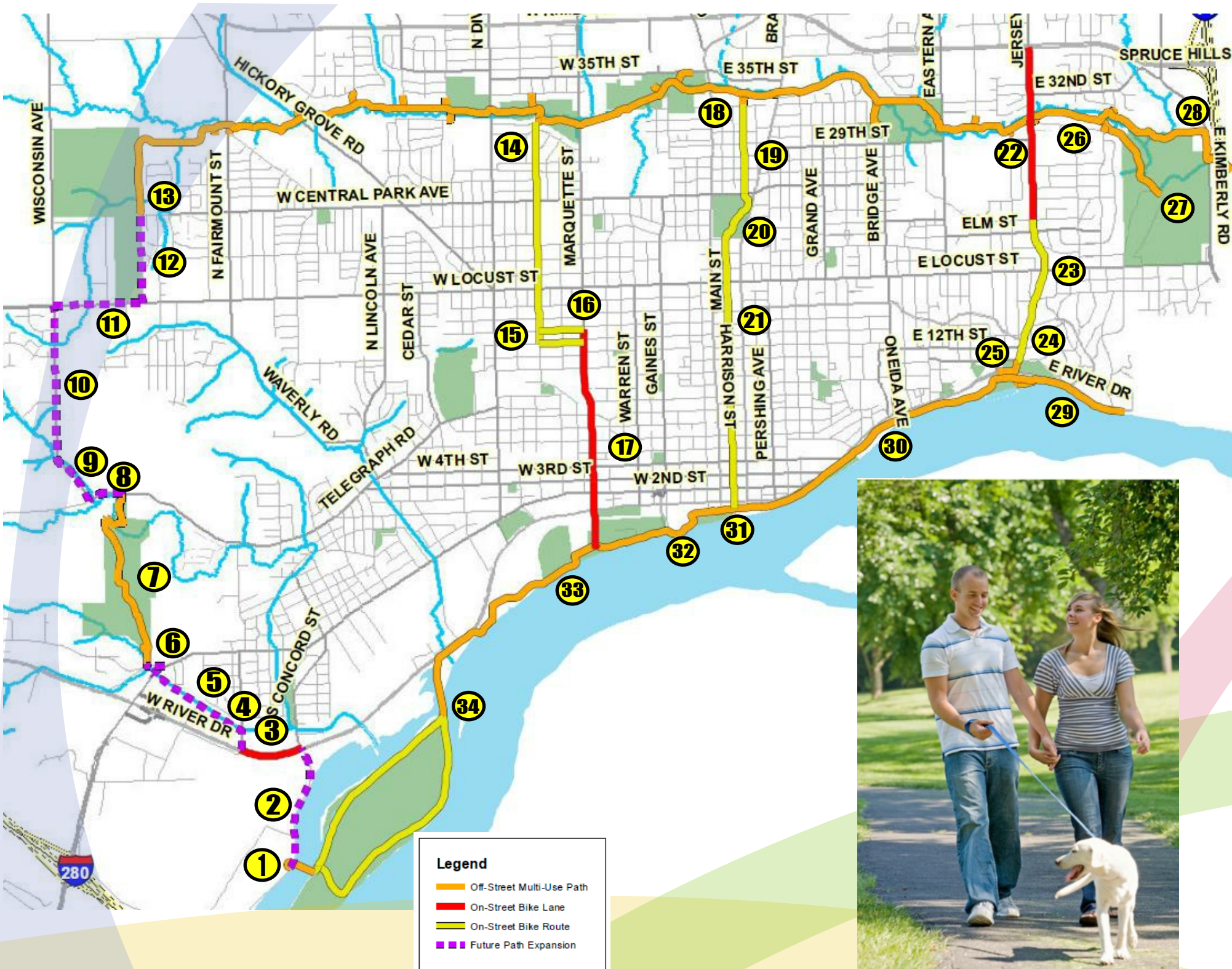
**563-328-7275 (PARK)**

700 West River Drive  
Davenport, Iowa 52802

[www.cityofdavenportiowa.com/parks](http://www.cityofdavenportiowa.com/parks)



# Guide to Davenport's Recreational Trail



## West Side Connector

1. Trail runs across slough over new Credit Island Bridge
2. Concord Street north to River Drive
3. North side of River Drive west to Fairmount Street
4. North on Fairmount Street to John Fell Drive
5. Northwest on John Fell Drive to Rockingham Road
6. East on Rockingham Road to Ricker Hill Road
7. From Ricker Hill Road, turn north onto Sunderbruch Trail
8. Sunderbruch Trail exits on Telegraph Road
9. West on Telegraph Road to Wisconsin Avenue
10. North on Wisconsin Avenue to Locust Street
11. East on the north side of Locust to Emeis Drive
12. North on Emeis Drive to connect with Duck Creek Trail
13. East on Duck Creek Trail

## Marquette Connector

14. East on Duck Creek Trail to Washington Street.
15. South on Washington Street to 14<sup>th</sup> or 15<sup>th</sup> Street
16. East on 14<sup>th</sup> or 15<sup>th</sup> Street to Marquette Street
17. South on Marquette Street to Riverfront Trail



**Legend**

- Off-Street Multi-Use Path
- On-Street Bike Lane
- On-Street Bike Route
- Future Path Expansion